

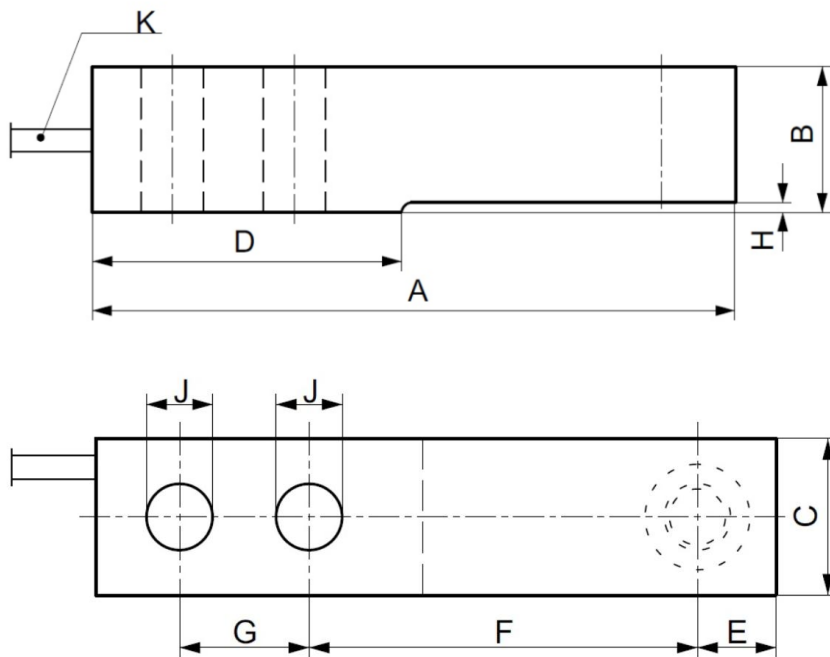
A-SBT05 Shear Beam load cell



Description

A-SBT05 Single-ended shear beam load cell designed for multiple cell applications such as low profile platform or small tank scales when used with proper mounting accessories. It is insensitive to side loading and capable of reversed loading.

Main Dimensions and Accessories(mm)



Cap	A	B	C	D	E	F	G	H	J	K
110/220/550kg, 1.1t	133.4	30.2	30.7	57.7	15.4	76.2	25.4	1.7	13	3m
1.76t	133.4	30.2	30.7	51.7	15.4	76.2	25.4	1.7	13	3m

2.2t	171.5	36.5	36.8	76.2	19.1	95.3	38.1	2.5	20.5	6m
4.4t	171.5	42.9	42.9	76.2	19.1	95.3	38.1	2.5	20.5	6m
10t	245.1	72.9	60	119.9	30.2	134.9	50	11.2	27	6m

Specifications

Capacity	110kg~10t	Input resistance	380±10Ω
Rated output	2.0 mv/v±0.1%	Output resistance	350±3Ω
Total error	0.05,C3	Safe overload	150%F.S
Creep in 30 minutes	<±0.02%F.S	Ultimate overload	300%F.S
Temperature effect span	<±0.02%F.S/10°C	Excitation voltage	10V AC/DC
Temperature effect zero	<±0.02%F.S/10°C	Maximum excitation voltage	15V AC/DC
Compensated temperature range	-10~+40°C	Insulation resistance	≥5000MΩ
Operating temperature range	-30~+70°C	Environmental protection	IP67/68
Zero balance	±1%F.S	Material,	Alloy steel/stainless steel

Cable: 3m@<2t; 6m@>2t

Wring: +Exc (Blue) ; -Exc (Black); +Sig (White); -Sig (Red); +Sen (Green); -Sen (Gray)